

READY CORPUS CHRISTI

News From the City of Corpus Christi
Office of Emergency Management

HURRICANE

PREPAREDNESS



Preparing for Hurricane Season

Now is the time to prepare before a storm threatens our area.
Here are some suggestions to consider as you make your plan.

HAVE A PLAN

It's crucial to plan ahead for disasters since your family may not be together. Consider how to reach a safe location, how to communicate, how to reunite, and what actions to take in various situations.

Prepare a disaster supply kit ahead of time, as you may need to evacuate quickly without time to gather supplies.

Have a pet emergency plan: ensure ID tags are updated, keep your dog on a leash or cat in a carrier during evacuation, and maintain a 3- to 5-day supply of food and water.

State of Texas Emergency Assistance Registry (STEAR)

Register today, dial 2-1-1
Who should register?

People who

- Have a medical or access need which would prevent them from evacuating on their own
- Do not have adequate transportation to evacuate themselves
- Use a medical device which requires electricity

Important Contact Information

City Call Center
311

Office of Emergency Management
361-826-1100

City Website:
www.corpuschristitx.gov

Evacuation Support

If you lack transportation during an approaching hurricane, go to the nearest RTA bus stop for free transport to a processing hub. From there, CCISD buses will take you out of town and to safety.

Emergency Supply List

- 3 to 5-day supply of non-perishable food that requires no cooking
- 1 gallon of water per day per person and pet
- Hand-operated can opener
- Plastic plates, cups, utensils
- Battery-powered or hand-crank radios
- First-aid supplies, flashlights, whistles
- Prescriptions and medications
- Hand sanitizer, wipes, bleach
- Toilet paper, paper towels, garbage bags
- Soaps and personal supplies
- Sunscreen and insect repellent
- Cash
- Extra clothing
- Chargers for phones, tablets, and electronics

People with Disabilities

To customize your kit for your family's unique needs, include:

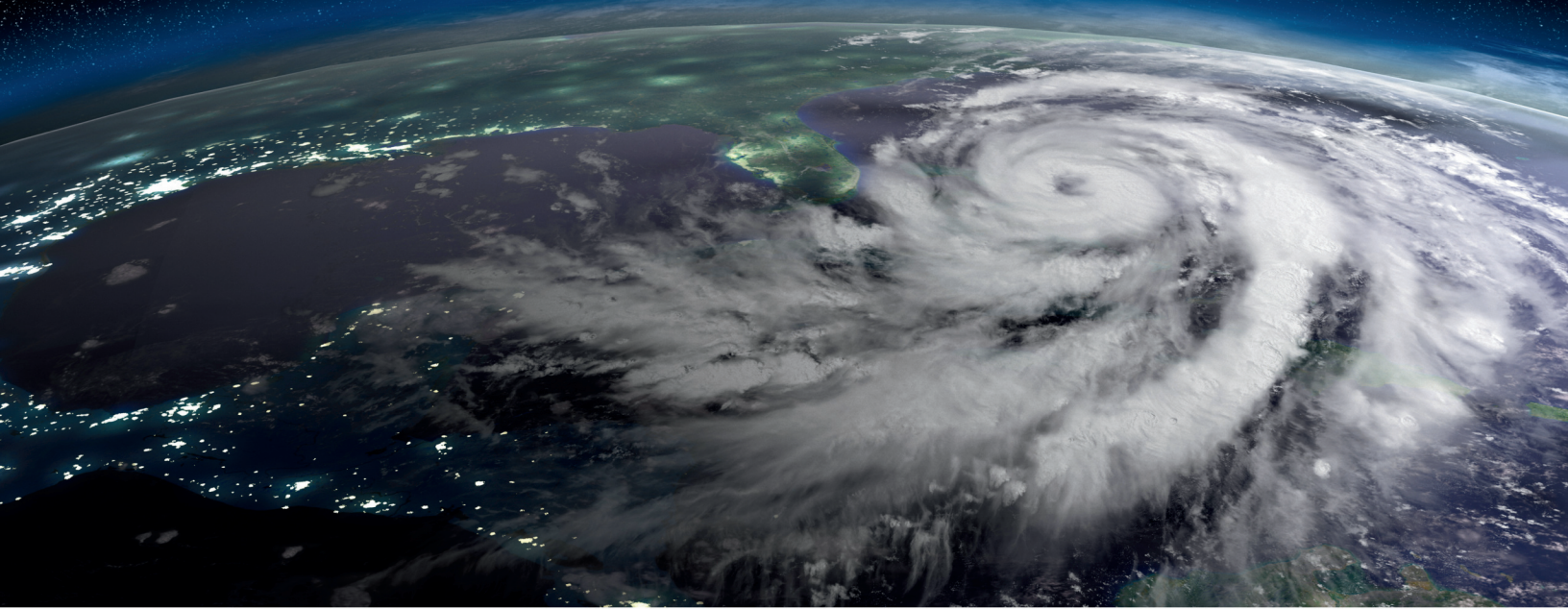
- Supplies like catheters, medications, and syringes
- Contact info for your doctor, pharmacy, and medical suppliers
- Care provider and family member contact information
- Unique daily life items
- A list of all medications you take

ALTERNATE EVACUATION ROUTES

- From Corpus Christi, take:
FM 624 West from Calallen through Orange Grove to SH 16
SH 16 North to San Antonio
- From Downtown Corpus Christi, take:
SH 35 to Gregory, left on FM 136 through Bayside to FM 2678 to US 183
follow US 183 North to Austin



- From Downtown Corpus Christi, follow US 181 North to San Antonio
- From Downtown Corpus Christi, follow US 181 North to SH 123 in Karnes City
- Padre Island Drive to SH 44 West through Robstown, through Alice, to Freer, to US 59 to Laredo



The Corpus Christi and Nueces County ReverseAlert system notifies residents via phone, text, or email about local emergencies, such as storms, fires, and evacuations. Alerts are sent to affected areas, enhancing public safety.

Sign up at reversealert.org to stay informed during emergencies!



Evacuation Zones

