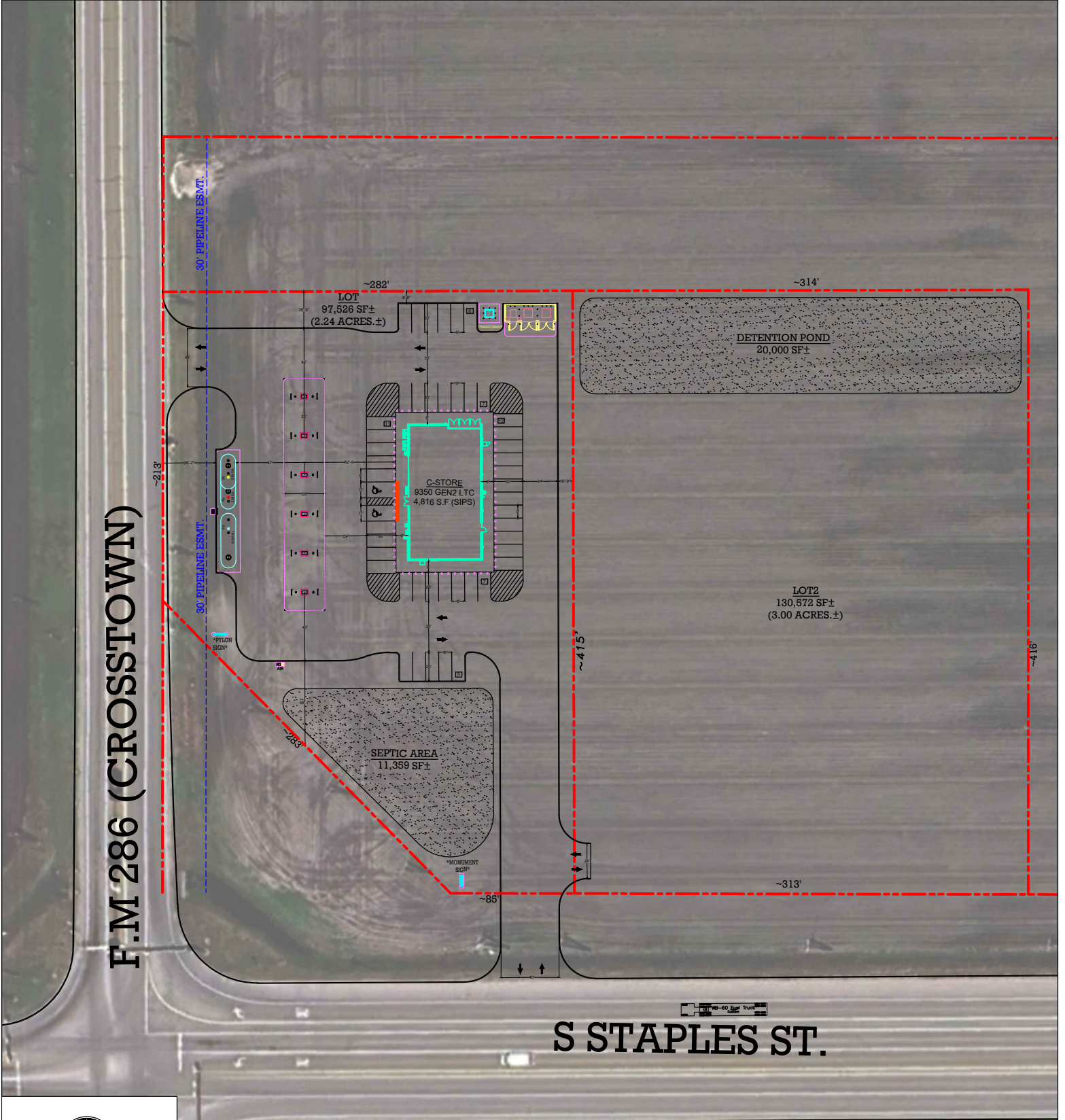


PRELIMINARY SITE PLAN

FM RD 2444 (S STAPLES ST. & FM 286)
CORPUS CHRISTI, TX - 78415

- NOTES:
1. THIS PRELIMINARY SITE PLAN IS FOR PLANNING PURPOSES ONLY.
 2. THIS PRELIMINARY SITE PLAN MUST BE REVIEWED BY ALL GOVERNING JURISDICTIONS FOR COMPLIANCE.
 3. ALL EXISTING CONDITIONS MUST BE VERIFIED.
 4. ALL MEASUREMENTS ARE ESTIMATED.

PROTOTYPE:	C-STORE	DEVELOPER	DESIGNER	DATE
BLDG/SALES SF:	4,816 S.F	COMPANY: VAQUERO VENTURES	COMPANY: VAQUERO VENTURES	01/14/26
ACREAGE:	(+/-) 2.24 ACRES	NAME: W.A. LANDRETH	NAME: DOUGLAS D. OBI	
PARKING PROVIDED:	48 SPACES	PHONE #: N/A	PHONE #: N/A	



F.M 286 (CROSSTOWN)

S STAPLES ST.

NORTH

0' 45' 90'

SCALE: 1" = 90'